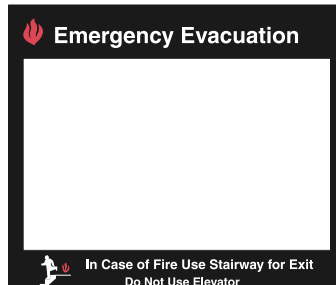
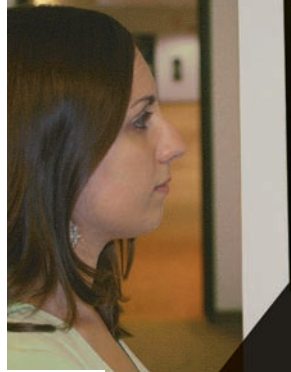


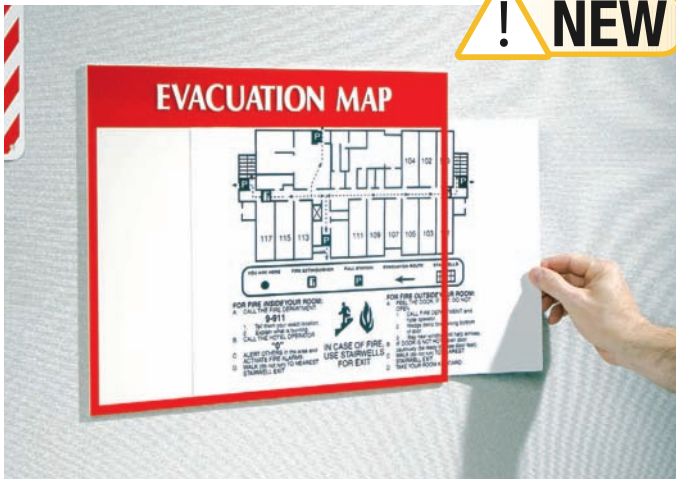
► Emergency Evacuation Frames

- Holders display your custom evacuation maps
- Clear acrylic frames hold your custom maps and allow you to easily change them when updates are needed
- Simply print and insert your map into the frame
- Non-glare, scratch resistant finish
- Holders available in standard or photoluminescent lettering
- For photoluminescent version, print your map on a clear acetate insert and it will glow in the dark
- Two adhesive mounting strips on back for easy installation
- Choice of two sizes — 11-1/2"W x 11"H frame holds a 11"w x 8-1/2"h insert and 17-1/2"W x 15"H frame holds a 17"W x 11"H insert
- Choice of two designs



Catalog Number	Size (W x H)	Material
102850	11½" X 11"	Standard
102852	17½" X 15"	Standard
102851	11½" X 11"	Luminous
102853	17½" X 15"	Luminous

Catalog Number	Size (W x H)	Material
102854	11½" X 11"	Standard
102856	17½" X 15"	Standard
102855	11½" X 11"	Luminous
102875	17½" X 15"	Luminous



► Evacuation Plan Insert Holder

- Simply print and insert your evacuation map
- 17-1/2"w x 13-1/2"h frame holds standard 17" x 11" insert
- Non-glare, scratch-resistant finish
- Vivid red border with raised white lettering
- 2 adhesive mounting strips on back for easy installation

Catalog Number	Size (W x H)
102849	17½" X 13½"

► Evacuation/Map Display/Holder

- Easy-to-see acrylic board
- Quickly shows viewers the best evacuation route from their work area
- Display size: 15" H x 11" W

Catalog Number
45381

